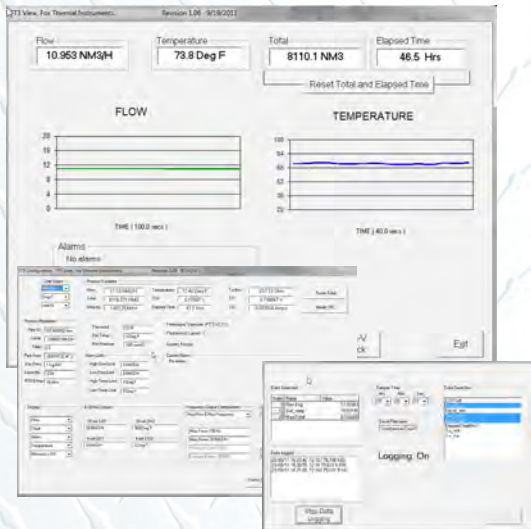




FT2A View™ Software Tool

- Quick access to all configuration parameters with pop-up windows and pull down menus
- Selection of measurement units, flow and temperature ranges, alarm settings and more
- Display of alarm codes
- Storage of meter configurations to a file that can be archived
- View raw data that can be used to diagnose or troubleshoot your meter



399 Reservation Road
Marina, CA 93933
Phone: (831) 384-4300
Fax: (831) 337-5786
sales@foxthermalinstruments.com
www.foxthermalinstruments.com

Configuration and Data Logging Application

FT2A View™ is an intuitive, Windows® XP/7 compatible software tool that provides complete configuration and remote process monitoring functions for the Fox Model FT2A Thermal Gas Mass Flow Meter and Temperature Transmitter.

Communication via a Laptop or PC serial USB communications port lets you install and commission your flow meter quickly, no matter how complex your configuration needs. Once the instrument is up and running, FT2A View™ lets you adjust meter configuration, evaluate transmitter alarm conditions, collect process data, and view measurements from your Laptop, PC or control station.

View Process Data from Your PC

The intuitive and easy-to-use FT2A View™ software gives process engineers and maintenance personnel a real-time view of process conditions.

The main window displays all of the flow meter's parameters and process variables on the screen. The FT2A readings are automatically refreshed every second.

Quickly Configure and Adjust Flow Meter Settings

Clicking on the FT2A View "Configure" button opens a window that is used to configure the meter and to make adjustments to displays, outputs, alarm settings and flow totalizer.

- The "Display" section permits programming of lines 1 and 2 of the local display.
- The "4-20 mA" section permits programming of the two 4 to 20mA outputs for flow rate and temperature.
- "Digital Output Select" permits scaling of the digital output as an alarm indicator or a pulse/frequency output.
- "Digital Input" permits programming of a contact input to reset the totalizer or the selection of a calibration curve.
- The "Serial Com" button allows the user to configure the bus type.

Simple, Easy-to-Use Data Logging Function

Saving process data to an Excel spreadsheet is initiated by selecting the "Data Logger" button from the main window. The Data Logger Window then prompts the user to choose from a list of available readings such as flow rate, total, temperature, etc.

The user can also choose the sample interval time in hours, minutes, or seconds from easy-to-use drop-down menus. Excel™ can be used to store the data by clicking "Save Config. To File" button. The user can enter a filename or choose a file path from a drop down menu in the Filename window.

Once the "Start Data Logging" button is clicked, the program begins to collect the data to the Excel™ file at the specified rate and saves it to disk at the chosen interval time. The Data Logger function can be stopped at any time by clicking the "Stop Data Logging" button.

This simple, easy-to-use data logging feature helps process engineers analyze flow parameters, evaluate transmitter alarm conditions, and develop charts and graphs for performance comparisons.