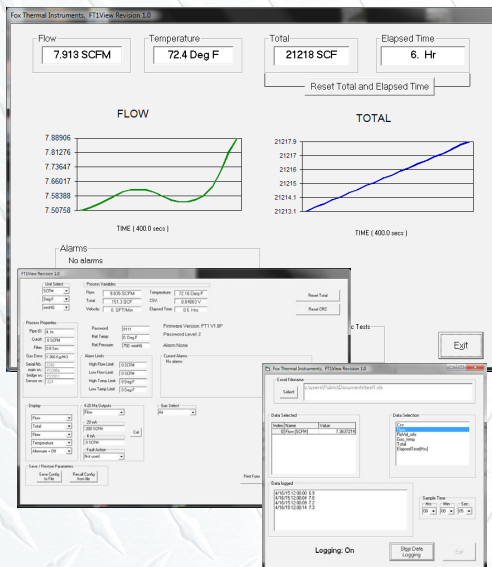




FT4A View™ Software Tool

- Quick access to all configuration parameters with pop-up windows and pull down menus
- Selection of measurement units, flow and temperature ranges, alarm settings and more
- Gas-SelectX® Gas Selection Menu
- CAL-V Calibration Validation Certificate
- Logs - 40 Daily Totals (24 hour totals)
- Data Logging to an Excel™ spreadsheet
- Display of alarm codes
- Storage of meter configurations to a file that can be archived
- View raw data that can be used to diagnose or troubleshoot your meter



399 Reservation Road
Marina, CA 93933
Phone: (831) 384-4300
Fax: (831) 384-5786
sales@foxthermalinstruments.com
www.foxthermalinstruments.com

Configuration and Data Logging Application

FT4A View™ is an intuitive, Windows® XP/7/8/10 compatible software tool that provides complete configuration and remote process monitoring functions for the Fox Model FT4A Thermal Gas Mass Flow Meter.

View Process Data from Your PC

Communication via a Laptop or PC serial USB communications port lets you commission your flow meter quickly, no matter how complex your configuration needs. The intuitive and easy-to-use FT4A View software gives process engineers and maintenance personnel a real-time view of process conditions. FT4A View™ lets you adjust meter configuration, evaluate transmitter alarm conditions, collect process data, choose a gas from a library of choices and view measurements from your Laptop, PC or control station.

Quickly Configure and Adjust Flow Meter Settings

The main window displays all of the flow meter's parameters and process variables on the screen. The FT4A readings are automatically refreshed every second. Clicking on the "Configure" button opens a window that is used to configure the meter and to make adjustments to displays, outputs, alarm settings and flow totalizer.

- The "Display" section permits programming of line 1 and line 2 of the local display.
- The "4-20mA" section permits scaling of the 4-20mA output for flow rate or temperature.
- "Digital Output Select" permits scaling of the digital output as an alarm indicator or a pulse output.
- The "Serial Com" button allows the user to configure the bus type.
- When FT4A View™ is used to initiate the CAL-V test, a pdf of a calibration validation certificate for the test can be generated, saved, and printed.

Multiple Calibration Choices with Expanded Gas-SelectX® Menus

Each Model FT4A flowmeter is pre-programmed with a list of gas choices available through the advanced and easy-to-use Gas-SelectX® feature. Gas-SelectX® is a gas library where numerous pure gases are listed alongside a mixed gas menu.

For pure gases, the user selects quickly from the drop-down list of gases such as: Air, Argon, Butane, Carbon Dioxide, Helium, Hydrogen, Methane, Natural Gas, Nitrogen, Oxygen, and Propane. If a mixture is required, the user can create a custom mixture of any three of the pure gases available to suit their particular application needs.

Simple, Easy-to-Use Data Logging Function

Saving process data to an Excel spreadsheet is initiated by selecting the "Data Logger" button from the main window. The Data Logger Window then prompts the user to choose from a list of available parameters such as flow rate, total, temperature, etc.

The user can also choose the sample interval time in hours, minutes, or seconds from easy-to-use drop-down menus. The user can enter a filename or choose a file path from a drop down menu in the Filename window.

This simple, easy-to-use data logging feature helps process engineers analyze flow parameters, evaluate transmitter alarm conditions, and develop charts and graphs for performance comparisons.

New Logs for Configuration and Gas/Gas Mix Data

New logs will display important information from 5 key log menus: GAS, CFG, VAL, TOT, and ENG. The GAS log will show the gas/gas mix, gross heating value and density of the customer's selected gas/gas mix. The CFG log will show configuration data such as alarm limits, flow cutoff, etc. The VAL log takes the customer to the CAL-V calibration validation data for the meter. The TOT log will list 40 24-hour totals beginning with the previous day. Finally, the ENG log lists the flow meter identity and factory-set information.